



# Survey Pro

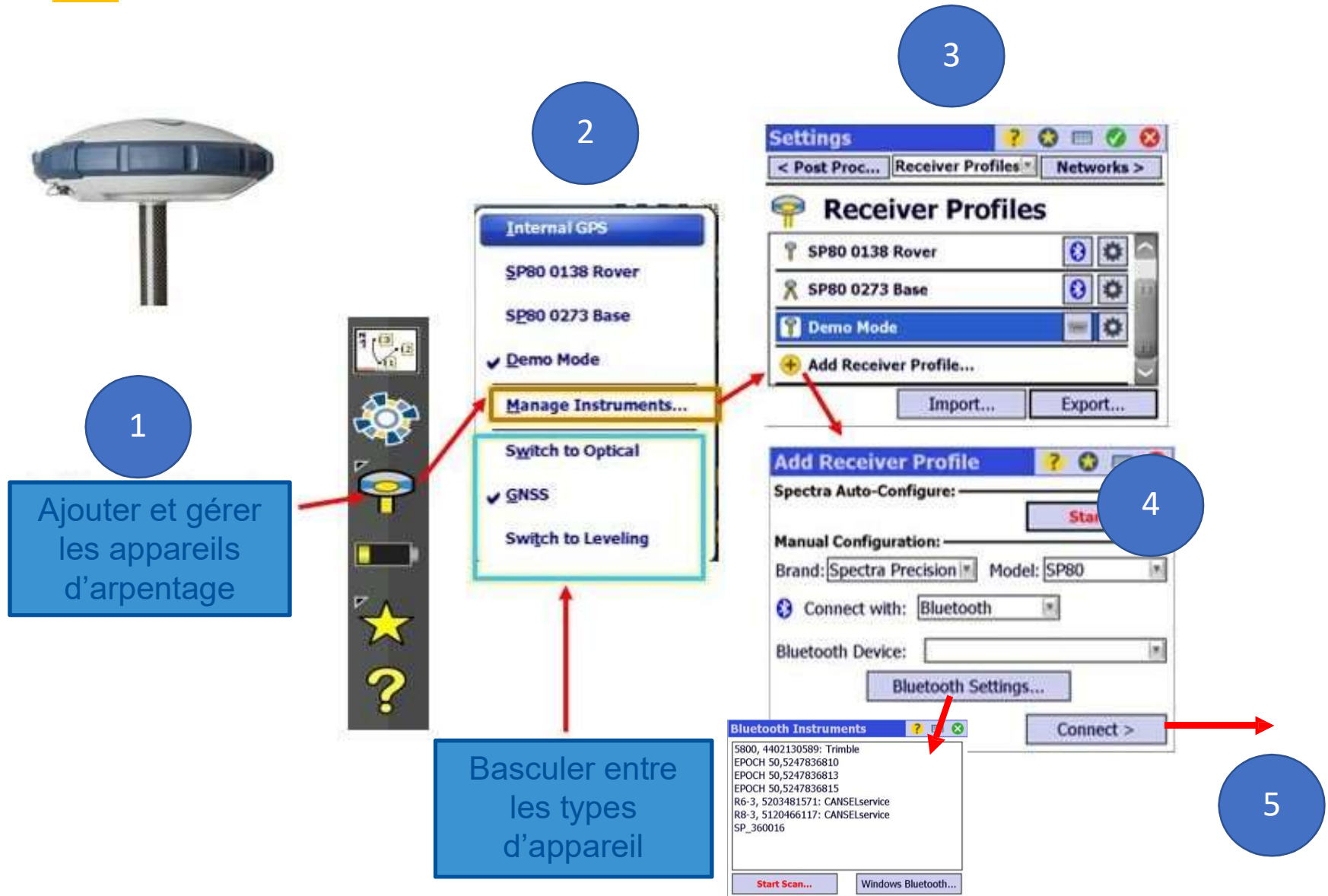
Ajouter un récepteur GPS





# Ajouter un récepteur GPS

Cansel





# Ajouter un récepteur GPS

6

Receiver Profile

Auto-Configure: [Start >]

Manual Configuration:

Brand: Spectra Precision Model: SP80

Connect with: Bluetooth

Bluetooth Device: [ ]

[Bluetooth Settings...]

[Connect >]

7

7a

Modem Survey Modem >

Setup Type: Base

Elevation Mask: 10

Corrections: RTCM 3.0

[Set to OFF mode]

7b

7b

Modem Survey

Data Modem: Generic Serial

Baudrate: 9600

Parity: None

Serial Port: C

[Configure...]

SP80 0273 Base

7c

Internal XDL Micro Settings

Channel: 10 : 445.3125

Sensitivity: High

Over Air Protocol: Transparent (w EOT)

Air Link Speed: 9600

8

8

- SP80 0003 Rover [Bluetooth] [Settings]
- SP80 0045 Base [Bluetooth] [Settings]



**e-Learning**

[E-Learning@Cansel.ca](mailto:E-Learning@Cansel.ca)

**Support:** 1.800.357.0561  
[cansel.support@cansel.ca](mailto:cansel.support@cansel.ca)

