



Adding Missing Geoid File

In TBC





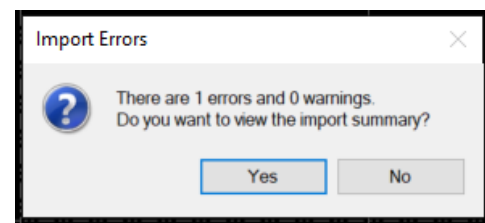
Adding Missing Geoid File

Summary

This document describes how to identify and add a missing geoid in TBC's Coordinate System Database.

When importing a Job file we will either get a pop up or an error warning from TBC.

This warning will explain that the Geoid model is presently missing in TBC.



Time zone: Reference number: Description: Comment 1: Comment 2: Comment 3:	Geoid: Vertical datum: Calibrated site:
Additional Coordinate System Details	
Local Site Settings	
Project latitude:	? Ground scale factor: 1
Project longitude:	? False easting offset: 0.000 m
Project height:	1000.000 m False northing offset: 0.000 m
Import Summary	
C:\ProgramData\Trimble\Trimble Access Emulator 2019.10\Trimble Data\Projects\1\Test Missing Geoid.job	
Date created: 1/6/2020 10:56:20 AM Date imported: 1/6/2020 10:58:00 AM	
Errors: 1	
1. Wrong geoid name " detected!	
Messages: 1	
1. Current project coordinate system changed to the system from imported file 'World wide/UTM - 11 North'.	
Return to top	



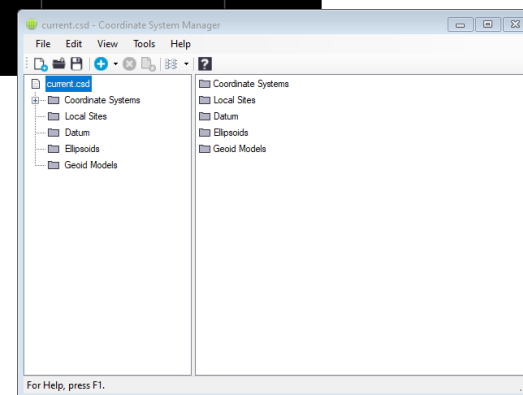
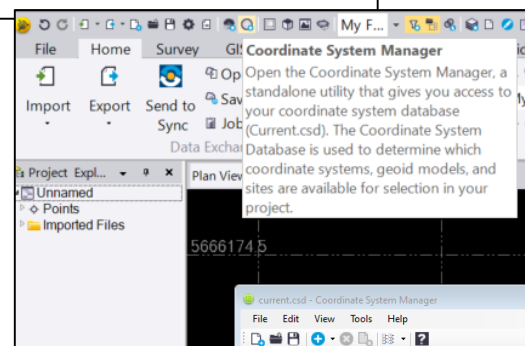
Adding Missing Geoid File

Cansel

This message appears because the geoid model that is referenced in the Job/DC file was not found in current.csd (the coordinate system database used by Business Center HCE).

Before you can use a coordinate system with a new geoid model, you must first register this geoid model in the database.

Unit zone: Reference number: Description: Comment 1: Comment 2: Comment 3:	Geoid: Vertical datum: Calibrated site:
Additional Coordinate System Details	
Local Site Settings:	
Project latitude: 7	Ground scale factor: 1
Project longitude: 7	False easting offset: 0.000 m
Project height: 1000.000 m	False northing offset: 0.000 m
Import Summary	
C:\ProgramData\Trimble\Trimble Access Emulator 2019.10\Trimble Data\Projects\1 Test Missing Geoid.job	
Date created: 1/6/2020 10:56:20 AM Date imported: 1/6/2020 10:58:00 AM	
Errors: 1	
1. Wrong geoid name" detected!	
Messages: 1	
1. Current project coordinate system changed to the system from imported file 'World wide UTM - 11 North':	
Return to job	





Adding Missing Geoid File

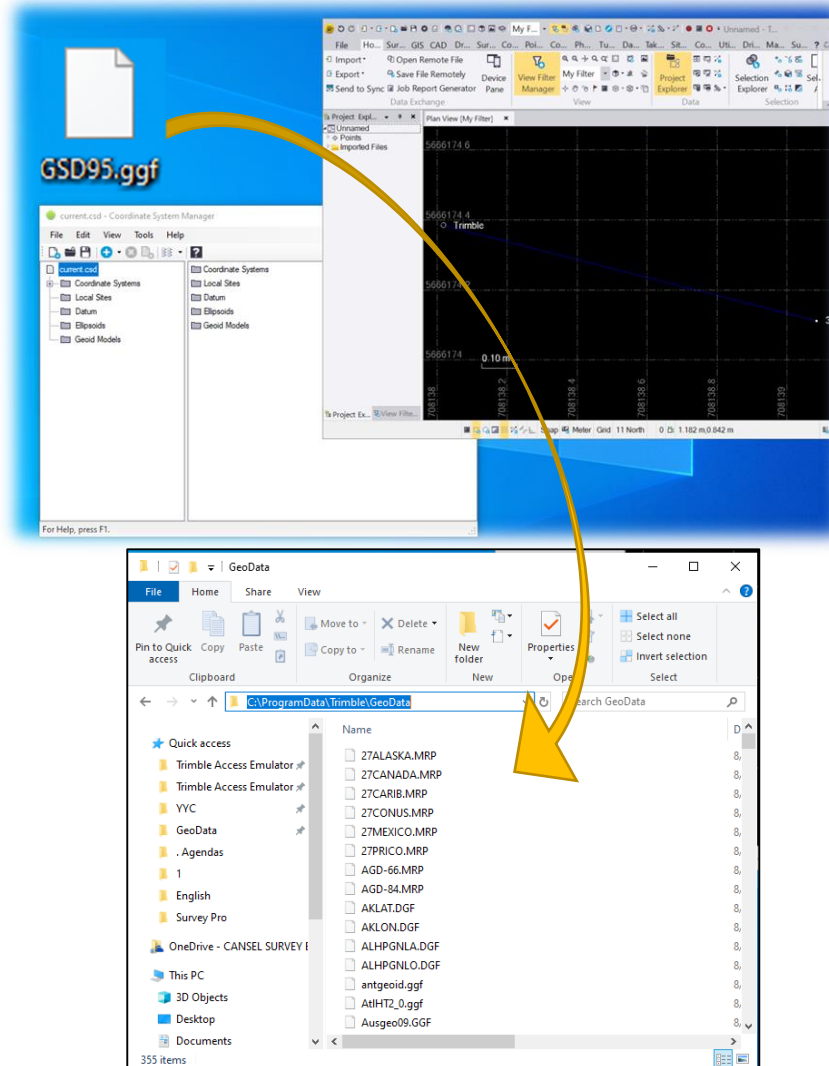
Cansel

Copy the geoid file (*.GGF) into the directory where the coordinate database is located that Business Center HCE uses.

This can be at one of the following locations:

C:\Program Files
(x86)\CommonFiles\Trimble\Geodata\
current.csd

C:\ProgramData\Trimble\GeoData\current.csd



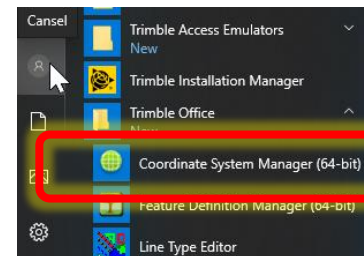
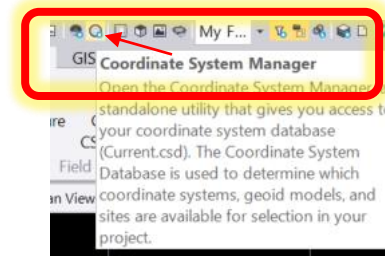


Adding Missing Geoid File

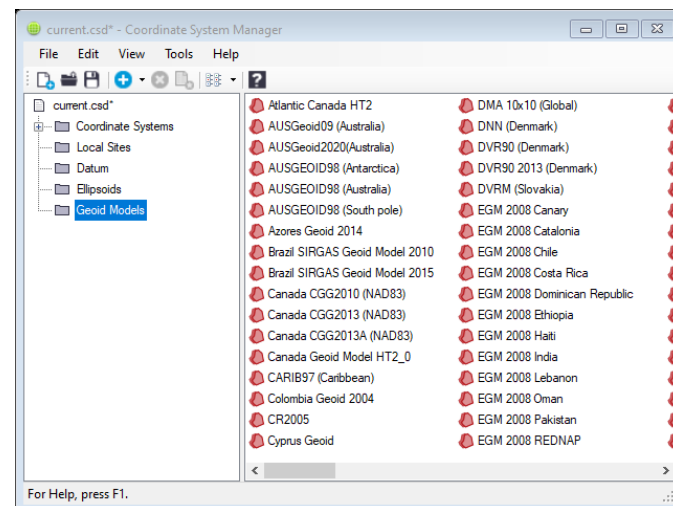
Cansel



Note: To see which current.csd is used, run the Coordinate System Manager from within Business Center HCE. Once the program is open, select Tools / Options to see the set path to the current.csd.



Once you have copied the *.GGF file into the correct directory, close the Coordinate System Manager and then re-open it.





Adding Missing Geoid File

In the Coordinate System Manager, do the following:

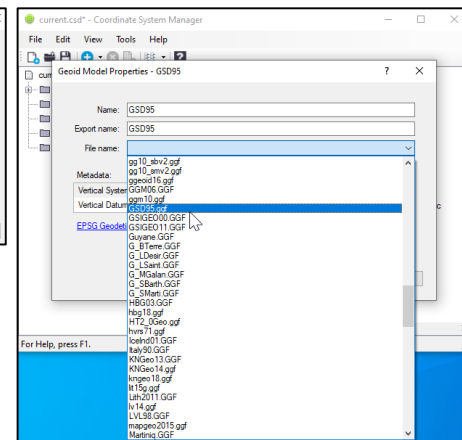
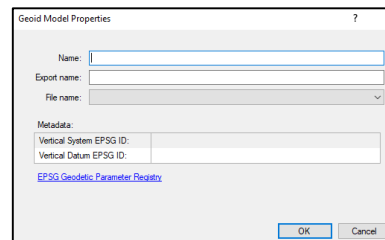
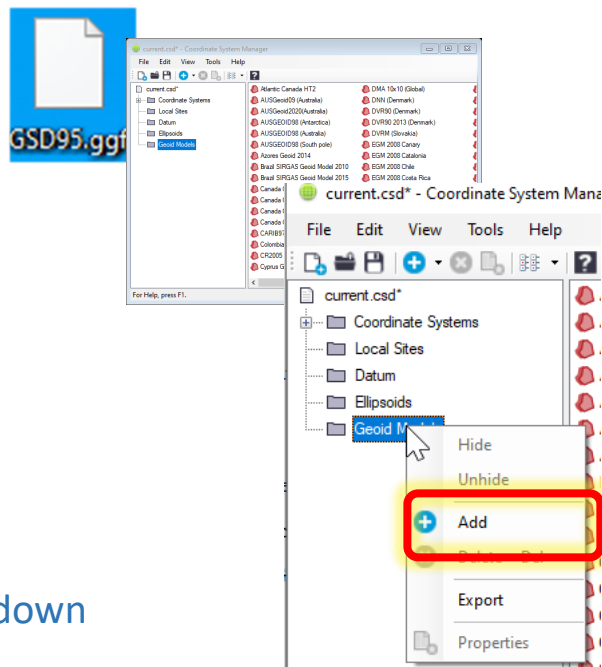
Select Edit / Add / New Geoid Model.

Enter a name for the geoid model.

Select a geoid model (.ggf) from the drop-down list and then click OK.

Select File / Save.

You can now import the Job/DC file - the geoid model will be found.





e-Learning

E-Learning@Cansel.ca

Support: 1.800.357.0561
cansel.support@cansel.ca

