



# Working with Coordinate Systems

in GPS Pathfinder Office





# Working with Coordinate Systems

## Summary

This document aims to provide a quick guide on how change and set Coordinate Systems, Datum's and Geoids within GPS Pathfinder Office.



GPS Pathfinder® Office software  
Version 5.60

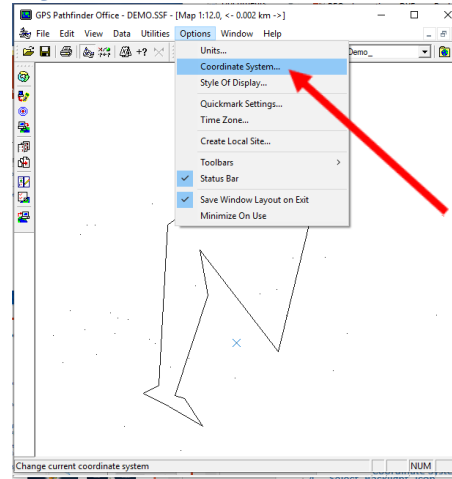




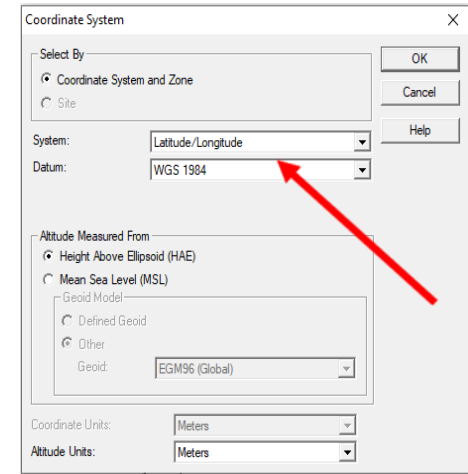
# Working with Coordinate Systems

## Steps...

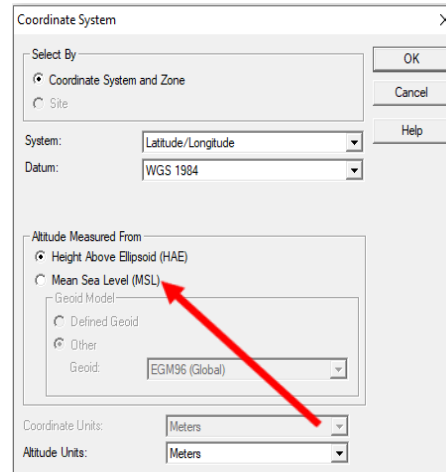
1. First, select 'Options' then 'Coordinate Systems' on the main screen of GPS Pathfinder Office.
2. In the Coordinate System window, click on the 'System' and 'Datum' dropdown arrows to set as desired.
3. Choose the 'Mean Sea Level (MSL)' option, then selection 'Other' to set the Geoid Model as desired.
4. Lastly, select the 'OK' button in the top right corner to set the new chosen parameters.



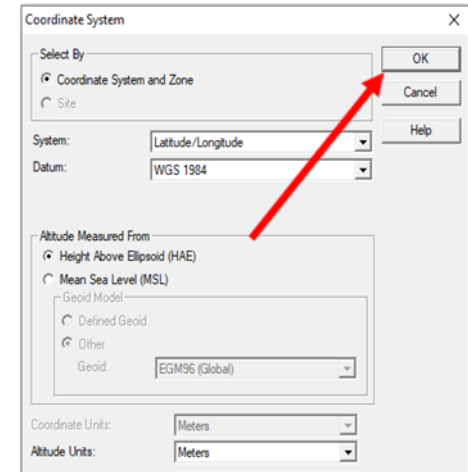
1



2



3



4



**e-Learning**

**[E-Learning@Cansel.ca](mailto:E-Learning@Cansel.ca)**

**Support: 1.800.357.0561**  
**[cansel.support@cansel.ca](mailto:cansel.support@cansel.ca)**

